

## Connectors for aluminum/copper code conductors

Designed and approved for use with both aluminum and copper conductors



### One-hole lugs

- For 90 °C certified to 600 V and recommended up to 35 kV<sup>†</sup> applications
- Easily matched to the correct Color-Keyed installing die for positive compressions
- Hardened steel dies compress connector around cable, changing round strands to polygonal shapes and cold flowing strands and connector into a solid, homogenous mass

- Long compression areas ensure complete contact
- Multiple compressions prevent creep of aluminum conductors
- Filled with high-temperature oxide-inhibitor compound
- Electro tin plating prevents electrolytic corrosion of copper to ensure lowest contact resistance

**Material** – High-conductivity wrought aluminum

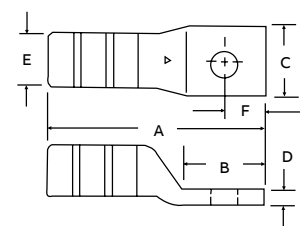
**Finish** – Electro tin plated



### One-hole lugs<sup>†</sup>

Cat no.	Cable size Al-Cu (AWG or kcmil)	Bolt size	Dimensions in. (mm)						Die code	Colour code
			A	B	C	D	E	F		
60096	#10	#10	1.09 (27.7)	0.56 (14.2)	0.41 (10.4)	0.06 (1.5)	0.27 (6.9)	0.22 (5.6)	21	Red
60097	#10	¼	1.31 (33.3)	0.72 (18.3)	0.43 (10.9)	0.07 (1.8)	0.27 (6.9)	0.34 (8.6)	21	Red
60099	#10	⅜	1.53 (38.9)	0.93 (23.6)	0.58 (14.7)	0.06 (1.5)	0.27 (6.9)	0.44 (11.2)	21	Red
60101-TB	#8	#10	1.22 (31.0)	0.56 (14.2)	0.41 (10.4)	0.09 (2.3)	0.28 (7.1)	0.22 (5.6)	24	Blue
60102-TB	#8	¼	1.38 (35.1)	0.71 (18.0)	0.44 (11.2)	0.09 (2.3)	0.28 (7.1)	0.34 (8.6)	24	Blue
60103-TB	#8	⅝	1.56 (39.6)	0.91 (23.1)	0.60 (15.2)	0.06 (1.5)	0.28 (7.1)	0.44 (11.2)	24	Blue
60104-TB	#8	⅜	1.60 (40.6)	0.93 (23.6)	0.60 (15.2)	0.06 (1.5)	0.28 (7.1)	0.44 (11.2)	24	Blue
60106-TB	#6	#10	1.52 (38.6)	0.59 (15.0)	0.47 (11.9)	0.13 (3.3)	0.35 (8.9)	0.22 (5.6)	29	Grey
60107-TB	#6	¼	1.67 (42.4)	0.75 (19.1)	0.47 (11.9)	0.13 (3.3)	0.35 (8.9)	0.34 (8.6)	29	Grey
60108-TB	#6	⅝	1.83 (46.5)	0.91 (23.1)	0.63 (16.0)	0.09 (2.3)	0.35 (8.9)	0.44 (11.2)	29	Grey
60109-TB	#6	⅜	1.86 (47.2)	0.93 (23.6)	0.63 (16.0)	0.09 (2.3)	0.35 (8.9)	0.44 (11.2)	29	Grey
60112-TB	#4	¼	1.81 (46.0)	0.75 (19.1)	0.64 (16.3)	0.19 (4.8)	0.46 (11.7)	0.34 (8.6)	37	Green
60113-TB	#4	⅝	2.00 (50.8)	0.91 (23.1)	0.64 (16.3)	0.19 (4.8)	0.46 (11.7)	0.44 (11.2)	37	Green
60114-TB	#4	⅜	2.03 (51.6)	0.93 (23.6)	0.64 (16.3)	0.19 (4.8)	0.46 (11.7)	0.44 (11.2)	37	Green
60116-TB	#2	¼	1.91 (48.5)	0.75 (19.1)	0.72 (18.3)	0.19 (4.8)	0.51 (13.0)	0.34 (8.6)	42	Pink
60117-TB	#2	⅝	2.06 (52.3)	0.91 (23.1)	0.72 (18.3)	0.19 (4.8)	0.51 (13.0)	0.44 (11.2)	42	Pink
60118-TB	#2	⅜	2.09 (53.1)	0.93 (23.6)	0.72 (18.3)	0.19 (4.8)	0.51 (13.0)	0.44 (11.2)	42	Pink
60120	#2	½	2.25 (57.2)	1.41 (35.8)	0.88 (22.4)	0.19 (4.8)	0.51 (13.0)	0.69 (17.5)	42	Pink
60122	#1	¼	2.30 (58.4)	0.81 (20.6)	0.75 (19.1)	0.19 (4.8)	0.56 (14.2)	0.34 (8.6)	45	Gold
60123	#1	⅝	2.39 (60.7)	0.91 (23.1)	0.75 (19.1)	0.19 (4.8)	0.56 (14.2)	0.44 (11.2)	45	Gold
60124	#1	⅜	2.42 (61.5)	0.93 (23.6)	0.75 (19.1)	0.19 (4.8)	0.56 (14.2)	0.44 (11.2)	45	Gold
60126	#1	½	2.89 (73.4)	1.41 (35.8)	0.88 (22.4)	0.16 (4.1)	0.56 (14.2)	0.69 (17.5)	45	Gold
60128	1/0	¼	2.36 (59.9)	0.81 (20.6)	0.88 (22.4)	0.19 (4.8)	0.62 (15.7)	0.34 (8.6)	50	Tan
60129	1/0	⅝	2.51 (63.8)	0.97 (24.6)	0.88 (22.4)	0.19 (4.8)	0.62 (15.7)	0.44 (11.2)	50	Tan
60130	1/0	⅜	2.51 (63.8)	0.97 (24.6)	0.88 (22.4)	0.19 (4.8)	0.62 (15.7)	0.44 (11.2)	50	Tan
60132	1/0	½	2.95 (74.9)	1.41 (35.8)	0.94 (23.9)	0.19 (4.8)	0.62 (15.7)	0.69 (17.5)	50	Tan

Diagram



<sup>†</sup> For installations from 16 kV up to 35 kV, consult shielded cable manufacturers for stress relief and insulation requirements. Call your regional sales office for sizes not listed. For tool and die selection charts, see the section E31-E48 of the Tools, Dies and Kits catalogue.

## Connectors for aluminum/copper code conductors

Designed and approved for use with both aluminum and copper conductors



**Material** – High-conductivity wrought aluminum

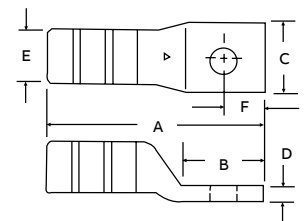
**Finish** – Electro tin plated



### One-hole lugs<sup>†</sup> (continued)

Cat no.	Cable size Al-Cu (AWG or kcmil)	Bolt size	Dimensions in. (mm)						Die code	Colour code
			A	B	C	D	E	F		
60134	2/0	¼	2.48 (63.0)	0.87 (22.1)	0.97 (24.6)	0.22 (5.6)	0.70 (17.8)	0.34 (8.6)	54	Olive
60135	2/0	⅝	2.64 (67.1)	1.03 (26.2)	0.97 (24.6)	0.22 (5.6)	0.70 (17.8)	0.44 (11.2)	54	
60136	2/0	¾	2.64 (67.1)	1.03 (26.2)	0.97 (24.6)	0.22 (5.6)	0.70 (17.8)	0.44 (11.2)	54	
60138	2/0	½	3.10 (78.7)	1.41 (35.8)	1.03 (26.2)	0.22 (5.6)	0.70 (17.8)	0.69 (17.5)	54	
60140	3/0	¼	2.58 (65.5)	0.87 (22.1)	1.06 (26.9)	0.22 (5.6)	0.77 (19.6)	0.34 (8.6)	60	Ruby
60141	3/0	⅝	2.83 (71.9)	1.09 (27.7)	1.06 (26.9)	0.22 (5.6)	0.77 (19.6)	0.44 (11.2)	60	
60142	3/0	¾	2.83 (71.9)	1.09 (27.7)	1.06 (26.9)	0.22 (5.6)	0.77 (19.6)	0.44 (11.2)	60	
60144	3/0	½	3.15 (80.0)	1.41 (35.8)	1.06 (26.9)	0.22 (5.6)	0.77 (19.6)	0.69 (17.5)	60	
60147	4/0	⅝	3.53 (89.7)	0.88 (22.4)	1.21 (30.7)	0.25 (6.4)	0.86 (21.8)	0.38 (9.7)	66	White
60148	4/0	¾	3.59 (91.2)	0.93 (23.6)	1.21 (30.7)	0.25 (6.4)	0.86 (21.8)	0.38 (9.7)	66	
60150	4/0	½	3.90 (99.1)	1.25 (31.8)	1.21 (30.7)	0.25 (6.4)	0.86 (21.8)	0.50 (12.7)	66	
60151	4/0	⅝	4.65 (118.1)	2.00 (50.8)	1.21 (30.7)	0.25 (6.4)	0.86 (21.8)	0.75 (19.0)	66	
60154	250	¾	3.73 (94.7)	0.93 (23.6)	1.29 (32.8)	0.27 (6.9)	0.92 (23.4)	0.38 (9.7)	71	Red
60156	250	½	4.05 (102.9)	1.25 (31.8)	1.29 (32.8)	0.27 (6.9)	0.92 (23.4)	0.50 (12.7)	71	
60157	250	⅝	4.80 (121.9)	2.00 (50.8)	1.29 (32.8)	0.27 (6.9)	0.92 (23.4)	0.75 (19.0)	71	
60159	300	⅝	3.75 (95.3)	0.88 (22.4)	1.39 (35.3)	0.28 (7.1)	0.99 (25.1)	0.38 (9.7)	76	Blue
60160	300	¾	3.80 (96.5)	0.93 (23.6)	1.39 (35.3)	0.28 (7.1)	0.99 (25.1)	0.38 (9.7)	76	
60162	300	½	4.13 (104.9)	1.25 (31.8)	1.39 (35.3)	0.28 (7.1)	0.99 (25.1)	0.50 (12.7)	76	
60165	350	½	4.83 (122.7)	1.25 (31.8)	1.53 (38.9)	0.33 (8.4)	1.09 (27.7)	0.50 (12.7)	87	Brown
60166	350	⅝	5.58 (141.7)	2.00 (50.8)	1.53 (38.9)	0.33 (8.4)	1.09 (27.7)	0.75 (19.0)	87	
60168	400	½	4.95 (125.7)	1.25 (31.8)	1.65 (41.9)	0.38 (9.7)	1.18 (30.0)	0.50 (12.7)	94	Green
60171	500	½	4.95 (125.7)	1.25 (31.8)	1.79 (45.5)	0.38 (9.7)	1.28 (32.5)	0.50 (12.7)	99	Pink
60172	500	⅝	5.70 (144.8)	2.00 (50.8)	1.79 (45.5)	0.38 (9.7)	1.28 (32.5)	0.75 (19.0)	99	
60174	600	⅝	5.83 (148.1)	2.00 (50.8)	1.92 (48.8)	0.37 (9.4)	1.36 (34.5)	0.75 (19.0)	106	Black
60176	700	⅝	5.95 (151.1)	2.00 (50.8)	2.04 (51.8)	0.38 (9.7)	1.44 (36.6)	0.75 (19.0)	112	Purple
60178	750	⅝	6.03 (153.2)	2.00 (50.8)	2.13 (54.1)	0.40 (10.2)	1.50 (38.1)	0.75 (19.0)	115	Yellow
60184	1,000	⅝	6.78 (172.2)	2.00 (50.8)	2.50 (63.5)	0.50 (12.7)	1.77 (45.0)	0.75 (19.0)	140	-

Diagram



<sup>†</sup> For installations from 16 kV up to 35 kV, consult shielded cable manufacturers for stress relief and insulation requirements. Call your regional sales office for sizes not listed. For tool and die selection charts, see the section E31-E48 of the Tools, Dies and Kits catalogue.

## Connectors for aluminum/copper code conductors

Designed and approved for use with both aluminum and copper conductors



### Two-hole lugs

- For 90 °C certified to 600 V and recommended up to 35 kV<sup>†</sup> applications
- For aluminum and copper concentric conductors and compact code aluminum strandings
- Filled with oxide-inhibitor compound

**Material** – High-conductivity wrought aluminum

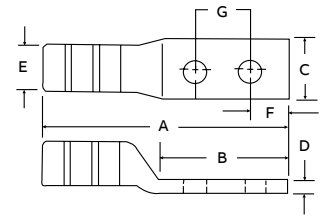
**Finish** – Electro tin plated



### Two-hole lugs

Cat no.	Cable size (AWG or kcmil)	Bolt size (in.)	Dimensions in. (mm)							Die code	Colour code
			A	B	C	D	E	F	G		
60230	1/0	3/8	3.50 (88.9)	1.90 (48.3)	0.88 (22.4)	0.19 (4.8)	0.62 (15.7)	0.38 (9.7)	1.00 (25.4)	50	Tan
60236	2/0	3/8	3.50 (88.9)	1.90 (48.3)	0.97 (24.6)	0.22 (5.6)	0.70 (17.8)	0.38 (9.7)	1.00 (25.4)	54	Olive
60238	2/0	1/2	5.03 (127.8)	3.41 (86.6)	0.97 (24.6)	0.22 (5.6)	0.70 (17.8)	0.75 (19.1)	1.75 (44.5)	54	Olive
60242	3/0	3/8	3.66 (93.0)	1.18 (30.0)	1.06 (27.0)	0.22 (5.6)	0.77 (19.6)	0.38 (9.7)	1.00 (25.4)	60	Ruby
60244	3/0	1/2	5.16 (131.1)	3.41 (86.6)	0.06 (1.5)	0.22 (5.6)	0.77 (19.6)	0.75 (19.1)	1.75 (44.5)	60	Ruby
60248	4/0	3/8	4.58 (116.3)	1.18 (30.0)	1.21 (30.7)	0.25 (6.4)	0.86 (21.8)	0.38 (9.7)	1.00 (25.4)	66	White
60250	4/0	1/2	5.65 (143.5)	3.41 (86.6)	1.21 (30.7)	0.25 (6.4)	0.86 (21.8)	0.50 (12.7)	1.75 (44.5)	66	White
60254	250	3/8	4.73 (120.1)	1.93 (49.0)	1.29 (32.8)	0.27 (6.9)	0.92 (23.4)	0.38 (9.7)	1.00 (25.4)	71	Red
60256	250	1/2	5.80 (147.3)	3.00 (76.2)	1.29 (32.8)	0.27 (6.9)	0.92 (23.4)	0.50 (12.7)	1.75 (44.5)	71	Red
60260	300	3/8	4.80 (121.9)	1.93 (49.0)	1.39 (35.3)	0.28 (7.1)	0.99 (25.1)	0.38 (9.7)	1.00 (25.4)	76	Blue
60262	300	1/2	5.88 (149.4)	3.00 (76.2)	1.39 (35.3)	0.28 (7.1)	0.99 (25.1)	0.50 (12.7)	1.75 (44.5)	76	Blue
60265	350	3/8	5.50 (139.7)	1.93 (49.0)	1.53 (38.9)	0.33 (8.4)	1.09 (27.7)	0.38 (9.7)	1.00 (25.4)	87	Brown
60267	350	1/2	6.58 (167.1)	3.00 (76.2)	1.53 (38.9)	0.33 (8.4)	1.09 (27.7)	0.50 (12.7)	1.75 (44.5)	87	Brown
60268	400	3/8	5.63 (143.0)	1.93 (49.0)	1.65 (41.9)	0.38 (9.7)	1.18 (30.0)	0.38 (9.7)	1.00 (25.4)	94	Green
60269	400	1/2	6.70 (170.2)	3.00 (76.2)	1.65 (41.9)	0.38 (9.7)	1.18 (30.0)	0.50 (12.7)	1.75 (44.5)	94	Green
60271	500	3/8	5.63 (143.0)	1.93 (49.0)	1.79 (45.5)	0.38 (9.7)	1.28 (32.5)	0.38 (9.7)	1.00 (25.4)	99	Pink
60273	500	1/2	6.70 (170.2)	3.00 (76.2)	1.79 (45.5)	0.38 (9.7)	1.28 (32.5)	0.50 (12.7)	1.75 (44.5)	99	Pink
60274	600	3/8	5.75 (143.1)	1.93 (49.0)	1.92 (48.8)	0.37 (9.4)	1.36 (34.5)	0.38 (9.7)	1.00 (25.4)	106	Black
60275	600	1/2	6.83 (173.5)	3.00 (76.2)	1.92 (48.8)	0.37 (9.4)	1.36 (34.5)	0.50 (12.7)	1.75 (44.5)	106	Black
60276	700	3/8	5.88 (149.4)	1.93 (49.0)	2.04 (51.8)	0.38 (9.7)	1.44 (36.6)	0.38 (9.7)	1.00 (25.4)	112	Purple
60277	700	1/2	6.95 (176.5)	3.00 (76.2)	2.04 (51.8)	0.38 (9.7)	1.44 (36.6)	0.50 (12.7)	1.75 (44.5)	112	Purple
60278	750	1/2	7.15 (181.6)	3.00 (76.2)	2.13 (54.1)	0.40 (10.2)	1.50 (38.1)	0.50 (12.7)	1.75 (44.5)	115	Yellow
60284	1,000	1/2	7.78 (197.6)	3.00 (76.2)	2.50 (63.5)	0.50 (12.7)	1.77 (45.0)	0.50 (12.7)	1.75 (44.5)	140	-

Diagram



Bolt holes 3/8 in. on 1 in. centers, 1/2 in. on 1 3/4 in. centers.

<sup>†</sup> For installations from 16 kV up to 35 kV, consult shielded cable manufacturers for stress relief and insulation requirements.

For tool and die selection charts, see the section E31-E48 of the Tools, Dies and Kits catalogue.

## Connectors for aluminum/copper code conductors



### Range-taking narrow-tongue single-barrel lugs

- For 90 °C certified to 600 V and recommended up to 35 kV<sup>†</sup> applications
- Bolt holes on 1<sup>3</sup>/<sub>4</sub> in. centers
- Wire barrel factory-filled with oxide-inhibitor compound

**Material** – Aluminum

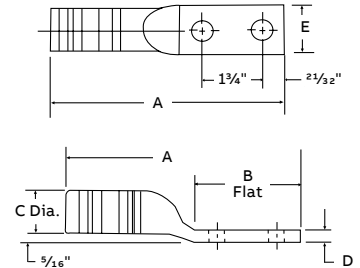
**Finish** – Tin-plated



### Range-taking narrow-tongue single-barrel lugs

Cat no.	Cable size Al-Cu (kcmil)	Bolt size (in.)	No. of compression hydraulic 12 ton tool or higher	Dimensions in. (mm)					Hex die code	Colour code
				A	B	C	D	E		
60273N	350–500	½	4	6.88 (174.8)	3.13 (79.5)	1.28 (32.5)	0.41 (10.4)	1.50 (38.1)	99H	Pink
60278N	500–750	½	4	7.13 (181.1)	3.69 (93.7)	1.50 (38.1)	0.50 (12.7)	1.50 (38.1)	115H	Yellow
60267NT	350	½	4	6.25 (158.75)	3.00 (76.2)	1.09 (27.68)	0.50 (12.7)	1.09 (27.68)	87H	Brown
60273NT	500	½	3	5.06 (128.52)	3.00 (76.2)	1.18 (30.17)	0.50 (12.7)	1.18 (30.17)	94H	Green
60275NT	600	½	3	5.38 (136.52)	3.00 (76.2)	1.30 (33.14)	0.50 (12.7)	1.30 (33.14)	99H	Pink
60278NT	750	½	3	5.38 (136.52)	3.00 (76.2)	1.03 (26.16)	0.50 (12.7)	1.30 (33.14)	99H	Pink

### Diagrams



<sup>†</sup> For installations from 16 kV up to 35 kV, consult shielded cable manufacturers for stress relief and insulation requirements. For tool and die selection charts, see the section E31-E48 of the Tools, Dies and Kits catalogue.

## Connectors for aluminum/copper code conductors

For aluminum-to-copper or aluminum-to-aluminum splicing



### Two-way splice connectors

- Connectors are pre-filled with oxide-inhibitor
- For 90 °C certified to 600 V and recommended up to 35 kV<sup>†</sup> applications
- For aluminum and copper concentric conductors and compact code aluminum strandings
- Permit aluminum conductors to be spliced to copper or aluminum conductors

**Material** – High-conductivity wrought aluminum

**Finish** – Electro tin plated



### Two-way splice connectors

Cat. no.	Cable size (AWG or kcmil)	Dimensions in. (mm)		Die code	Colour code
		A	E		
60500-TB	#10 Str.	1.00 (25.4)	0.27 (6.9)	21	Red
60501-TB	#8 Str.	1.19 (30.2)	0.28 (7.1)	24	Blue
60507-TB	#6 Str.	1.63 (41.4)	0.35 (8.9)	29	Grey
60512	#4 Str.	1.81 (46.0)	0.46 (11.7)	37	Green
60516	#2 Str./#3 Str.	1.81 (46.0)	0.51 (13.0)	42	Pink
60522-TB	#1 Str.	2.38 (60.5)	0.56 (14.2)	45	Gold
60530-TB	1/0	2.38 (60.5)	0.62 (15.7)	50	Tan
60536	2/0	2.50 (63.5)	0.70 (17.8)	54	Olive
60542	3/0	2.81 (71.4)	0.77 (19.6)	60	Ruby
60548	4/0	3.66 (93.0)	0.86 (21.8)	66	White
60554	250	3.91 (99.3)	0.92 (23.4)	71	Red
60560	300	3.97 (100.8)	0.99 (25.1)	76	Blue
60565	350	4.97 (126.2)	1.09 (27.7)	87	Brown
60568	400	4.97 (126.2)	1.18 (30.0)	94	Green
60571	500	4.97 (126.2)	1.28 (32.5)	99	Pink
60574	600	5.22 (132.6)	1.36 (34.5)	106	Black
60576	700	5.44 (138.2)	1.44 (36.6)	112	Purple
60578	750	5.69 (144.5)	1.50 (38.1)	115	Yellow
60584	1,000	6.69 (169.9)	1.77 (45.0)	140	–

<sup>†</sup> For installations from 16 kV up to 35 kV, consult shielded cable manufacturers for stress relief and insulation requirements. For tool and die selection charts, see the section E31-E48 of the Tools, Dies and Kits catalogue.

## Connectors for aluminum/copper code conductors

Splice aluminum conductors to copper conductors of equal ampacities



### Aluminum reducing connectors

- For 90 °C, certified to 600 V and recommended up to 35 kV<sup>†</sup> applications
- Filled with high-temperature oxide-inhibitor compound
- Designed for the right combination of equivalent sizes (example: 4/0 aluminum to 2/0 copper)
- Selection table gives aluminum/copper equivalents to all sizes

**Material** – High-conductivity wrought aluminum

**Finish** – Electro tin plated

### Installing tools:

TBM5(S) #10 AWG – 4/0 AWG

TBM6(S) #10 AWG – 350 kcmil

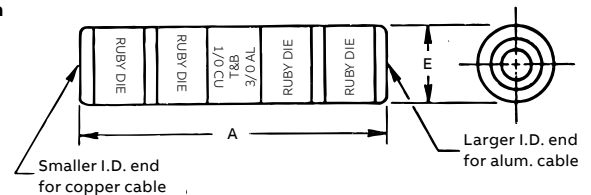
TBM8(S) #10 AWG – 350 kcmil



### Aluminum reducing connectors

Cat. no.	Cable size (AWG or kcmil)		Dimensions in. (mm)		Die code	Colour key
	Al	Cu	A	E		
60905-TB	#8	#10	0.81 (20.6)	0.28 (7.1)	24	Blue
60910	#6	#8	1.63 (41.4)	0.34 (8.6)	29	Grey
60915	#4	#6	1.81 (46.0)	0.44 (11.2)	37	Green
60925	#1	#3	2.38 (60.5)	0.53 (13.5)	45	Gold
60930	1/0	#2	2.38 (60.5)	0.63 (16.0)	50	Tan
60935	2/0	#1	2.50 (63.5)	0.69 (17.5)	54	Olive
60940	3/0	1/0	2.81 (71.4)	0.75 (19.1)	60	Ruby
60945	4/0	2/0	3.75 (95.3)	0.88 (22.4)	66H	White
60950	250	3/0	4.00 (101.6)	0.94 (23.9)	71H	Red
60955	300	4/0	4.06 (103.4)	1.00 (25.4)	76H	Blue
60960	350	4/0	5.06 (128.5)	0.09 (2.3)	87H	Brown
60965	400	250	5.06 (128.5)	1.22 (31.0)	94H	Green
60970	500	350	5.06 (128.5)	1.31 (33.3)	99H	Pink
60975	600	400	5.31 (134.9)	1.34 (34.0)	106H	Black
60980	700	500	5.56 (141.2)	1.44 (36.6)	112H	Purple
60985	750	500	5.81 (147.6)	1.50 (38.1)	115H	Yellow

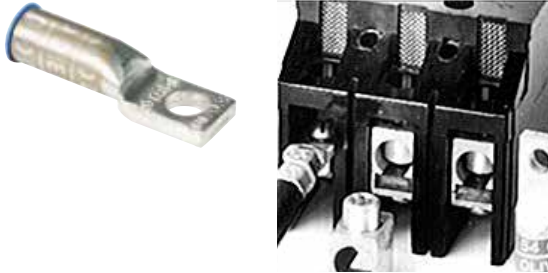
Diagram



<sup>†</sup> For installations from 16 kV up to 35 kV, consult shielded cable manufacturers for stress relief and insulation requirements. For tool and die selection charts, see the section E31-E48 of the Tools, Dies and Kits catalogue.

## Connectors for aluminum/copper code conductors

Much smaller than standard aluminum lugs for the same cable size



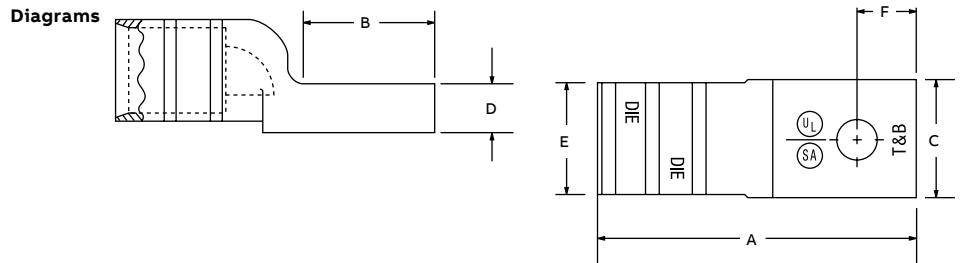
### One-hole aluminum compact-size equipment lugs

- For 90°C, certified 600 V applications
- For use with aluminum cables only
- Can be directly substituted for equipment mechanical lugs in most applications
- Only 7 dies handle all 14 lug sizes
- Factory-filled with joint compound
- Electro tin plated
- Supplied with Neoprene insulating covers



One-hole aluminum compact-size equipment lugs

Cat. no.	Aluminum cable (AWG or kcmil) size	Aluminum range (AWG or kcmil) taking*	Bolt hole (in.)	Dimensions in. (mm)					
				A	B	C	D	E	F
61102	#8	-	¼	1.33 (33.8)	0.54 (13.7)	0.50 (12.7)	0.14 (3.6)	0.37 (9.4)	0.25 (6.4)
61107	#6	-	¼	1.33 (33.8)	0.54 (13.7)	0.50 (12.7)	0.14 (3.6)	0.37 (9.4)	0.25 (6.4)
61112	#4	-	¼	1.33 (33.8)	0.54 (13.7)	0.50 (12.7)	0.14 (3.6)	0.37 (9.4)	0.25 (6.4)
61116	#2	-	¼	1.75 (44.5)	0.68 (17.3)	0.55 (14.0)	0.20 (5.1)	0.48 (12.2)	0.25 (6.4)
61122	#1	-	¼	1.75 (44.5)	0.68 (17.3)	0.55 (14.0)	0.20 (5.1)	0.48 (12.2)	0.25 (6.4)
61130	1/0	#8-1/0	⅜	2.00 (50.8)	0.83 (21.1)	0.64 (16.3)	0.20 (5.1)	0.57 (14.5)	0.38 (9.7)
61136	2/0	#1-2/0	⅜	2.00 (50.8)	0.83 (21.1)	0.64 (16.3)	0.20 (5.1)	0.57 (14.5)	0.38 (9.7)
61142	3/0	-	⅜	2.50 (63.5)	1.08 (27.4)	0.78 (19.8)	0.23 (5.8)	0.70 (17.8)	0.38 (9.7)
61148	4/0	2/0-4/0	⅜	2.50 (63.5)	1.08 (27.4)	0.78 (19.8)	0.23 (5.8)	0.70 (17.8)	0.38 (9.7)
61156	250	-	½	2.50 (63.5)	1.23 (31.2)	0.98 (24.9)	0.25 (6.4)	0.85 (21.6)	0.50 (12.7)
61162	300	#4-300	½	2.50 (63.5)	1.23 (31.2)	0.98 (24.9)	0.25 (6.4)	0.85 (21.6)	0.50 (12.7)
61165	350	250-350	½	3.25 (82.6)	1.23 (31.2)	1.20 (30.5)	0.41 (10.4)	1.04 (26.4)	0.56 (14.2)
61171	500	2/0-500	½	3.25 (82.6)	1.23 (31.2)	1.20 (30.5)	0.41 (10.4)	1.04 (26.4)	0.56 (14.2)
61178	750	500-750	⅝	3.75 (95.3)	1.54 (39.1)	1.49 (37.8)	0.41 (10.4)	1.33 (33.8)	0.81 (20.6)



\*For range-taking capability, use TBM8-750/TBM8-750M-1 Smart Tools. For tool and die selection charts, see the section E31-E48 of the Tools, Dies and Kits catalogue.