

Parallel-groove connectors

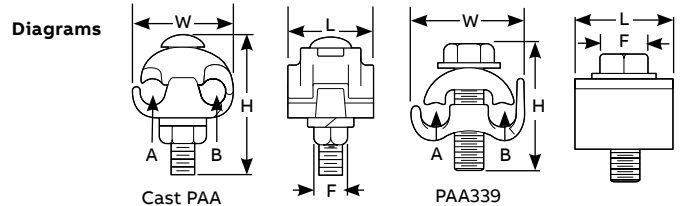
Aluminum parallel-groove clamps



- Galvanized steel carriage bolt, nut and lockwasher included
- Dual-rated for use on aluminum, ACSR and copper conductors
- Available prefilled with oxide inhibitor to prevent oxidation on copper-to-aluminum connections

PAA one- and two-bolt aluminum parallel-groove clamps

Standard Cat. no.	Prefilled Cat. no.	Conductor range (AWG or kcmil)				Conductor diameter (in.)				Dimensions (in.)				Bolt size
		Main		Tap		Main		Tap		F	H	L	W	
		ACSR	Al/Cu	ACSR	Al/Cu	Max.	Min.	Max.	Min.					
-	PAA29	#2-#6	#2 str.-#6 sol.	#2-#6	#2 str.-#6 sol.	0.316	0.162	0.316	0.162	1/16	1 3/16	1 13/32	1 3/8	5/16
-	PAA339	1/0-#6	1/0 str.-#6 sol.	1/0-#6	1/0 str.-#6 sol.	0.398	0.162	0.398	0.162	1/16	1 9/16	1 1/4	1 1/2	3/8
PAA4	PAA49	1/0-#6	1/0 str.-#6 sol.	1/0-#6	1/0 str.-#6 sol.	0.398	0.162	0.398	0.162	1/16	2 7/32	1 3/16	1 1/2	3/8
PAA5	PAA59	1/0-#8	1/0 str.-#8 sol.	1/0-#8	1/0 str.-#8 sol.	0.398	0.128	0.398	0.128	1/16	2 7/32	1 11/32	1 1/2	3/8
PAA6	PAA69	1/0-#8	2/0 str.-#8 sol.	1/0-#8	2/0 str.-#8 sol.	0.414	0.128	0.414	0.128	1/16	2 7/32	1 3/8	1 5/8	3/8
PAA10*	PAA109	336.4-1/0, 1/0-#6 AR	400-1/0 str., 1/0-#6 AR	1/0-#8	1/0 str.-#8 sol.	0.741	0.368	0.398	0.128	1/16	2 15/32	2	1 3/4	3/8
PAA12	PAA129	4/0-#2	4/0 str.-#2 sol.	4/0-#2	4/0 str.-#2 sol.	0.563	0.258	0.563	0.258	3/4	2 1/4	2	2	1/2
PAA400†	PAA4009†	336.4-1/0, 1/0-#6 AR	400-1/0 str., 1/0-#6 AR	336.4-1/0	400-1/0 str.	0.741	0.368	0.741	0.368	3/4	3 3/4	3 3/4	2 1/2	1/2



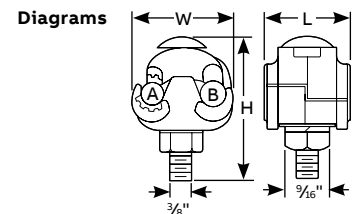
* RUS listed. † PAA400 and PAA4009 are two bolt clamps. AR = Over armor rod. Note: For hex-head bolt option, add "-3" suffix to the catalog number.



- Pressure-cast aluminum body effectively seals out moisture and resists corrosion
- Clamp separates conductors to reduce the possibility of galvanic corrosion

PAC Aluminum parallel-groove clamps with copper liner

Standard Cat. no.	Prefilled Cat. no.	Conductor range (AWG or kcmil)			Conductor diameter (in.)		Dimensions (in.)		
		ACSR	Al	Cu	Main	Tap	H	W	L
PAC345	PAC3459	1/0-#8	1/0 str.-#8 sol.	1/0 str.-#8 sol.	0.398-0.128	0.373-0.128	2 7/32	1 7/32	1 1/4
PAC7*	PAC79	336.4-1/0, 1/0-#6 AR	400-2/0 str., 1/0-#6 AR	1/0 str.-#8 sol.	0.741-0.398	0.373-0.128	2 15/32	1 5/8	1 7/8



* RUS Listed. Note: For hex-head bolt option, add "-3" suffix to the catalog number.

Parallel-groove connectors

PAE parallel-extruded type groove clamps



- Galvanized steel hardware provides high strength for heavy-duty applications
- Install with live line tools you already have
- Dual-rated for aluminum-to-copper connections
- Prefilled with oxide inhibitor (“-9” suffix in chart) to prevent oxidation on copper-to-aluminum connections

PAE parallel-extruded type groove clamps

Cat. no.	Conductor range (AWG or kcmil)		Conductor diameter				Fig.	Dimensions (in)						Galvanized aluminum	
			Main		Tap			H	W	L	F	B	A	Steel bolt thd. size	Bolt thd. size
			Max.	Min.	Max.	Min.									
PAE-335-79	1/0 str.-#6 sol.	1/0 str.-#6 sol.	0.398	0.162	0.398	0.162	1	1 ¹ / ₁₆	1 ¹ / ₂	1 ¹ / ₄	9/ ₁₆	-	-	3/ ₈ -16 UNC	3/ ₈ -16 UNC
PAE-2121-9*	2/0 ACSR-#6 sol., #6 AR	2/0 ACSR-#6 sol., #6 AR	0.447	0.162	0.447	0.162	1	2	1 ⁵ / ₈	1 ³ / ₈	9/ ₁₆	7/ ₈	-	3/ ₈ -16 UNC	3/ ₈ -16 UNC
PAE-2121X-79	2/0 ACSR-#6 sol., #6 AR	2/0 ACSR-#6 sol., #6 AR	0.447	0.162	0.447	0.162	1	2	1 ⁵ / ₈	1 ³ / ₈	9/ ₁₆	7/ ₈	-	-	3/ ₈ -16 UNC
PAE-4141-9*	4/0 ACSR-#2 sol., #4-#6 AR	4/0 ACSR-#2 sol., #4-#6 AR	0.563	0.258	0.563	0.258	1	2	2	1 ³ / ₈	9/ ₁₆	1/ ₂	-	3/ ₈ -16 UNC	3/ ₈ -16 UNC
PAE-3921-9-2	397.5 ACSR-3/0 str., 2/0-#6 AR	2/0 str.-#6 sol., #6 AR	0.743	0.464	0.414	0.162	2	2 ¹ / ₁₆	2 ¹ / ₄	1 ⁵ / ₈	3/ ₄	1 ¹ / ₈	-	1/2-13 UNC	1/2-13 UNC
PAE-9941-9	1000-397.5 ACSR, 336.4-2/0 AR	4/0 ACSR-#2 sol., #4-#6 AR	1.152	0.743	0.563	0.258	3	2 ¹³ / ₁₆	25 ³ / ₆₄	2 ¹ / ₄	3/ ₄	-	-	1/2-13 UNC	1/2-13 UNC
PAE-3931-9-2	397.5 ACSR-3/0 str., 2/0-#6 AR	3/0 ACSR-2 str., #6 AR	0.743	0.464	0.502	0.292	4	2 ¹ / ₁₆	2 ⁵ / ₁₆	3 ³ / ₈	3/ ₄	-	1 ³ / ₄	1/2-13 UNC	1/2-13 UNC
PAE-3939-9-2	397.5 ACSR-3/0 str., 2/0-#6 AR	397.5 ACSR-3/0 str., 2/0-#6 AR	0.743	0.464	0.743	0.464	5	2 ¹ / ₁₆	2 ¹ / ₁₆	3 ³ / ₈	3/ ₄	-	1 ¹ / ₈	1/2-13 UNC	5/ ₈ -11 UNC
PAE-9921-9	1000-397.5 ACSR, 336.4-2/0 AR	2/0 str.-#6 sol., #6 AR	1.152	0.743	0.414	0.162	3	2 ¹³ / ₁₆	2 ³ / ₁₆	2 ¹ / ₄	3/ ₄	-	-	1/2-13 UNC	5/ ₈ -11 UNC
PAE-9939-9	1000-397.5 ACSR, 336.4-2/0 AR	397.5 ACSR-3/0 str., 2/0-#6 AR	1.152	0.743	0.743	0.464	4	2 ¹³ / ₁₆	37 ³ / ₆₄	3 ¹ / ₂	3/ ₄	-	1 ¹ / ₂	1/2-13 UNC	5/ ₈ -11 UNC
PAE-9999-9	1000-397.5 ACSR, 336.4-2/0 AR	1000-397.5 ACSR, 336.4-2/0 AR	1.152	0.743	1.152	0.743	6	2 ¹³ / ₁₆	3 ¹ / ₂	6	3/ ₄	-	2	1/2-13 UNC	5/ ₈ -11 UNC

Diagrams

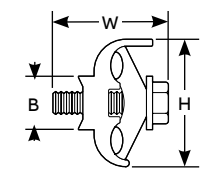


Fig. 1

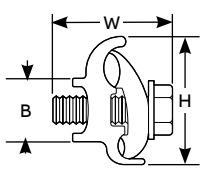


Fig. 2

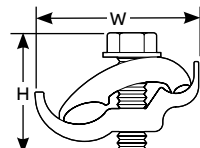
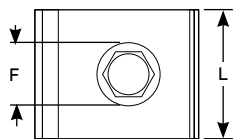
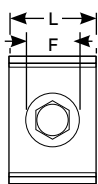


Fig. 3

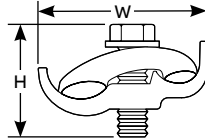
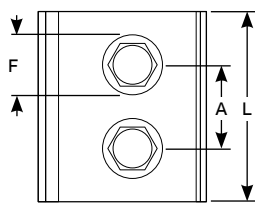


Fig. 4

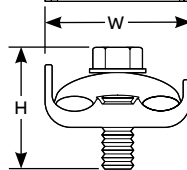
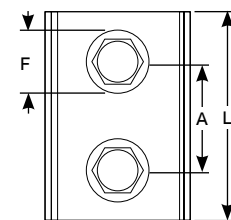


Fig. 5

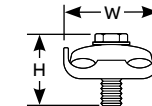
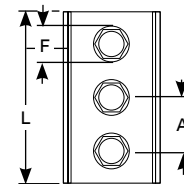


Fig. 6

* RUS accepted. AR = Over armor rod.

Note: For aluminum-hardware option, add “-7” suffix to the catalog number. For tin-plating option, add “-P” suffix to the catalog number.

For wax-dip option that provides oxide protection for aluminum-to-aluminum connections, add “-6” suffix to the catalog number.

Parallel-groove connectors

K series jumper clamps



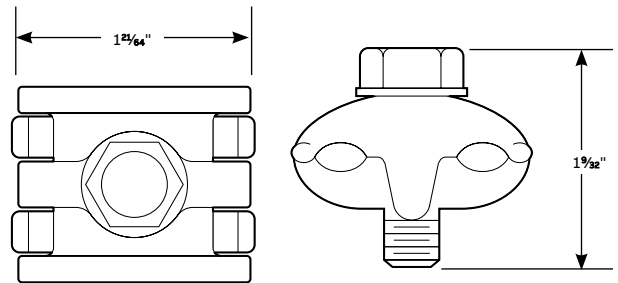
These jumper clamps are sized right for #8 solid copper to 1/0 ACSR or 2/0 copper.

- Made of copper alloy for high strength and durability
- Silicon-bronze hex-head washer bolt ensures a super-secure fitting
- Parallel-groove design eliminates the need to remove the bolt for installation
- Available unplated, plated or with plating in one groove – choose the model that works best with your wiring

Jumper clamp

Cat. no.	Plated groove (AWG)		Copper groove (AWG)		Both grooves plated (AWG)		Both grooves unplated (AWG)	
	Max.	Min.	Max.	Min.	Max.	Min.		
With one plated and one copper groove								
K1 ¹	1/0 ACSR, #2 SCG Amerductor, 7/16 galv. strand	#6 ACSR, #12 SCG Amerductor, #8 solid iron	2/0 str. copper, 7/16 Copperweld*, 2A Copperweld	#8 solid copper, #9–12D Copperweld, etc.	–	–	–	
With both grooves plated								
K2 ²	–	–	–	–	1/0 ACSR, #2 SCG Amerductor, 7/16 galvanized steel strand	#6 ACSR, #12 SCG Amerductor, #8 solid iron	–	
With both grooves unplated								
K3 ³	–	–	–	–	–	–	2/0 str. copper, 7/16 Copperweld, 2A Copperweld	#8 solid copper, 9 1/2 D Copperweld, etc.

Diagrams



* Trademark of Copperweld.

1) Plated with plating removed from one groove. For use with aluminum, amerductor or galvanized steel strand to copper or copper-bonded steel wires.

2) Clamp is plated. For use with amerductor, aluminum or galvanized steel stranding.

3) Clamp is not plated. For copper-to-copper connections.