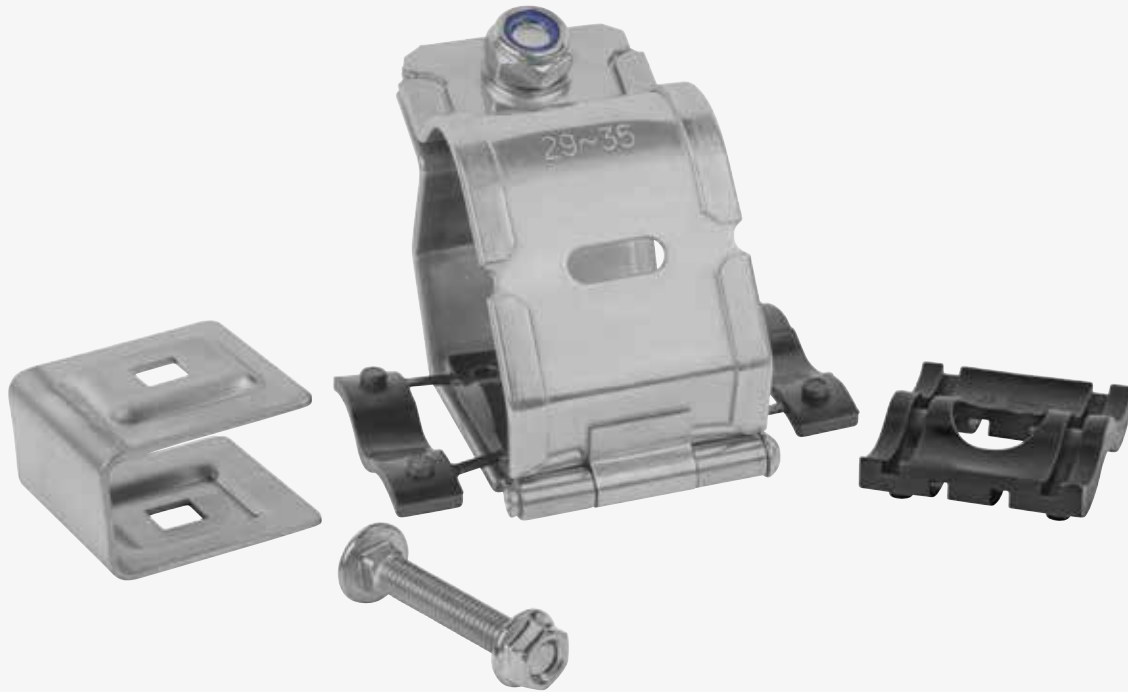

Short circuit protection

Cable cleats solutions



- 01 Before short circuit test
- 02 After short circuit test



—
01



—
02

Short circuit protection

Cable cleats solutions



Designed specifically to fit aluminum and steel T&B Cable Tray rungs, new stainless steel 316 cable cleats from ABB retain and support cables within the cable tray. In the event of a short circuit, they also help prevent damage to cables, cable tray and surrounding equipment and reduce the potential for personal injury.

Cable cleats can be used with T&B Cable Tray up to 36" (91 cm) in width. Cleats fit either ladder-style or ventilated tray. Adapter kits are sold separately for non-metallic square-rung tray and AH18 series aluminum tray. Please note that these cable cleats are not rated for use with solid bottom, one-piece, channel, wire basket, non-metallic strut-rung or non-metallic marine tray.

Features

- Available for both single and trefoil cable configurations in an array of range-taking sizes
- Cable cleats stainless steel 316 construction for high resistance to corrosion, weathering, abrasion and extreme temperatures
- Suitable for use in operating temperatures from -60 °C to 120 °C (-76 °F to 248 °F)
- Compact design occupies minimal space on cable tray rungs

Standards/certifications

- IEC 61914:2015



Classification

- Material: Stainless steel 316L
- Temperature range: -60 °C to 120 °C
- Resistance to impact: Very heavy
- Resistance to electromechanical forces: 170 kA peak, 0.33 m spacing, withstanding more than one short circuit
- Resistance to ultraviolet light: No cracks or damage
- Resistance to corrosion: High

Technical specifications

- Frame: 55 mm x 1.5 mm marine-grade, non-magnetic 316L stainless steel
- Closure hardware: Captive 316 stainless steel M10 bolt and nylon locknut
- Integral pad: Low-smoke, low-fume, halogen-free
- Tools required to install: Wrench
- Mounting hardware: Supplied with 316 stainless steel cable tray mounting bracket, 3/8" carriage bolt and flange nut

Typical applications

- Oil and gas
- Mining
- Utilities



Cable cleat selection and specification

All power phases in a circuit must be contained within the same cleat. Single cleats are only for use with multi-conductor cable.

Step 1 — Know your cables.

- What type of cable is being used? Single- or multi-conductor?
- What is the outside diameter of your cable(s)?

Step 2 — Know your system.

- What is the available short circuit current — RMS or peak?
- What type of cable tray is installed?

Step 3 — Select your cable cleats.

- ABB cable cleats come with hardware to mount to most standard T&B Cable Tray steel and aluminum ladder trays.
- Adapter kits for use with AH18 series aluminum and non-metallic square-rung cable tray are sold separately.

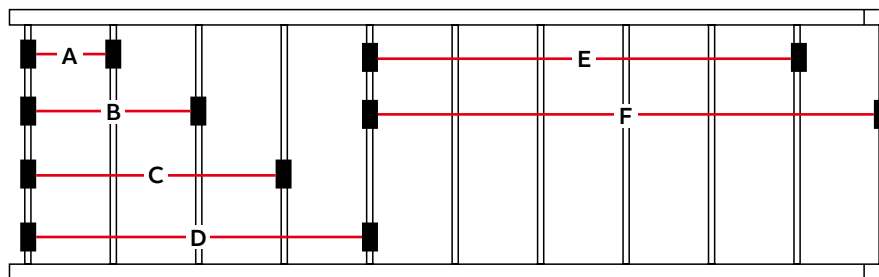
Step 4 — Determine cleat spacing for installation.

- Find the value equal to or greater than the available short circuit current for your system.

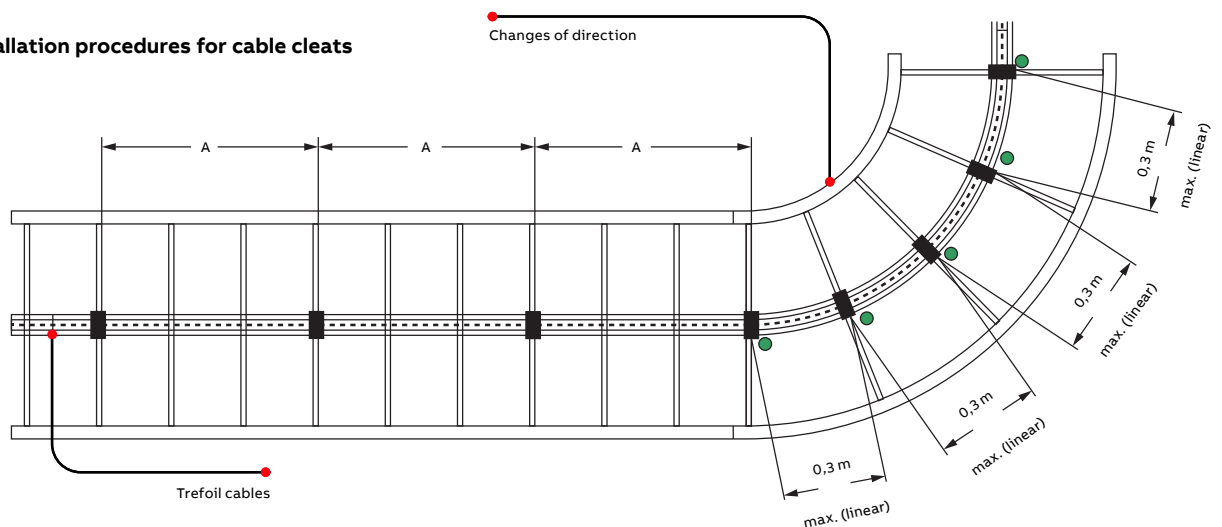
Cable cleat load rating

Short circuit peak current rating (kA) based on tray bottom style and cleat positioning

Tray Bottom Style	Cable cleat positioning					
	(A) On every rung	(B) Skip 1 rung	(C) Skip 2 rungs	(D) Skip 3 rungs	(E) Skip 4 rungs	(F) Skip 5 rungs
V	170	170	145	126	112	102
L06	170	154	126	109	97	89
L09	170	130	106	92	-	-
L12	164	116	95	-	-	-



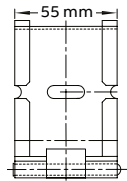
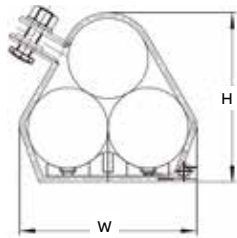
Recommended installation procedures for cable cleats



Ordering information

Cable cleats stainless steel 316 — trefoil style

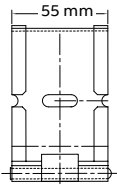
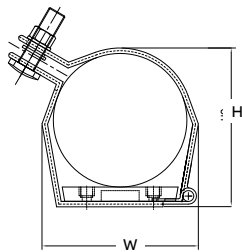
	Cat. no.	Cable outer diameter				Cleat dimensions			
		Minimum		Maximum		Height		Width	
		in.	mm	in.	mm	in.	mm	in.	mm
Diagrams	ATCC1723	0.67	17	0.91	23	2.15	54.5	2.09	53.2
	ATCC1925	0.75	19	0.98	25	2.30	58.5	2.26	57.4
	ATCC2329	0.91	23	1.14	29	2.58	65.5	2.59	65.8
	ATCC2531	0.98	25	1.22	31	2.70	68.5	2.76	70.0
	ATCC2733	1.06	27	1.30	33	2.85	72.5	2.92	74.2
	ATCC2935	1.14	29	1.38	35	3.01	76.5	3.09	78.4
	ATCC3238	1.26	32	1.50	38	3.25	82.5	3.34	84.8
	ATCC35415	1.38	35	1.63	41.5	3.48	88.5	3.63	92.1
	ATCC38445	1.50	38	1.75	44.5	3.68	93.5	3.87	98.4
	ATCC4248	1.65	42	1.89	48	3.98	101.0	4.16	105.7
	ATCC4551	1.77	45	2.01	51	4.19	106.5	4.41	112.0
	ATCC4753	1.85	47	2.09	53	4.31	109.5	4.59	116.6
	ATCC4955	1.93	49	2.17	55	4.49	114.0	4.74	120.4
	ATCC5157	2.01	51	2.24	57	4.63	117.5	4.91	124.6
	ATCC5359	2.09	53	2.32	59	4.78	121.5	5.07	128.8
	ATCC5561	2.17	55	2.40	61	4.94	125.5	5.24	133.0
	ATCC5763	2.24	57	2.48	63	5.08	129.0	5.40	137.2
	ATCC5965	2.32	59	2.56	65	5.22	132.5	5.57	141.4
	ATCC6167	2.40	61	2.64	67	5.37	136.5	5.73	145.6
	ATCC6369	2.48	63	2.72	69	5.52	140.3	5.90	149.8
	ATCC6571	2.56	65	2.80	71	5.67	144.0	6.06	154.0
	ATCC6773	2.64	67	2.87	73	5.82	147.7	6.23	158.2
	ATCC6975	2.72	69	2.95	75	5.96	151.4	6.39	162.4
	ATCC7177	2.80	71	3.03	77	6.11	155.2	6.56	166.6
	ATCC7379	2.87	73	3.11	79	6.26	158.9	6.72	170.8
	ATCC7581	2.95	75	3.19	81	6.40	162.6	6.89	175.0
	ATCC7783	3.03	77	3.27	83	6.55	166.4	7.06	179.2
	ATCC7985	3.11	79	3.35	85	6.70	170.1	7.22	183.4
	ATCC8187	3.19	81	3.43	87	6.84	173.8	7.39	187.6
	ATCC8389	3.27	83	3.50	89	6.98	177.4	7.55	191.8
	ATCC8692	3.39	86	3.62	92	7.21	183.2	7.80	198.1
	ATCC8896	3.47	88	3.78	96	7.50	190.6	8.07	205.0
	ATCC9199	3.58	91	3.90	99	7.72	196.2	8.38	212.8
	ATCC96103	3.78	96	4.06	103	8.02	203.7	8.71	221.2
	ATCC99107	3.90	99	4.21	107	8.32	211.2	9.04	229.6
	ATCC103111	4.06	103	4.37	111	8.61	218.6	9.37	238.0
	ATCC107115	4.21	107	4.53	115	8.90	226.1	9.70	246.4
	ATCC111119	4.37	111	4.69	119	9.20	233.6	10.03	254.8
	ATCC115123	4.53	115	4.84	123	9.49	241.0	10.36	263.1
	ATCC119129	4.69	119	5.08	129	9.93	252.2	10.85	275.7



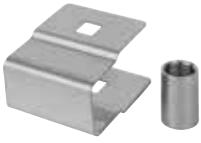
Ordering information

Cable cleats stainless steel 316 — single cable style (only for use with multi-conductor cable)

	Cat. no.	Cable outer diameter				Cleat dimensions			
		Minimum		Maximum		Height		Width	
		in.	mm	in.	mm	in.	mm	in.	mm
Diagrams	ASCC2832	1.10	28	1.26	32	1.81	46.0	1.84	46.7
	ASCC3034	1.18	30	1.34	34	1.89	48.0	1.87	47.4
	ASCC3236	1.26	32	1.42	36	1.97	50.0	1.87	47.4
	ASCC3438	1.34	34	1.50	38	2.05	52.0	1.95	49.5
	ASCC3640	1.42	36	1.58	40	2.13	54.0	2.03	51.5
	ASCC3842	1.50	38	1.65	42	2.21	56.0	2.11	53.6
	ASCC4044	1.58	40	1.73	44	2.28	58.0	2.30	58.4
	ASCC4246	1.65	42	1.81	46	2.36	60.0	2.33	59.1
	ASCC4448	1.73	44	1.89	48	2.45	62.1	2.35	59.8
	ASCC4650	1.81	46	1.97	50	2.52	64.0	2.44	61.9
	ASCC4852	1.89	48	2.05	52	2.60	66.0	2.52	63.9
	ASCC5054	1.97	50	2.13	54	2.68	68.0	2.60	66.0
	ASCC5256	2.05	52	2.21	56	2.70	68.5	2.68	68.0
	ASCC5458	2.13	54	2.28	58	2.84	72.0	2.76	70.1
	ASCC5660	2.21	56	2.36	60	2.91	74.0	2.84	72.1
	ASCC5862	2.28	58	2.44	62	2.99	76.0	2.92	74.2
	ASCC6064	2.36	60	2.52	64	3.07	78.0	3.00	76.3
	ASCC6266	2.44	62	2.60	66	3.15	80.0	3.09	78.4
	ASCC6468	2.52	64	2.68	68	3.23	82.0	3.17	80.4
	ASCC6670	2.60	66	2.76	70	3.31	84.0	3.25	82.5
	ASCC6872	2.68	68	2.84	72	3.39	86.0	3.33	84.6
	ASCC7074	2.76	70	2.91	74	3.41	86.5	3.41	86.6
	ASCC7276	2.84	72	2.99	76	3.54	90.0	3.49	88.7
	ASCC7478	2.91	74	3.07	78	3.62	92.0	3.57	90.7
	ASCC7680	2.99	76	3.15	80	3.70	94.0	3.63	92.3
	ASCC7882	3.07	78	3.23	82	3.78	96.0	3.74	94.9
	ASCC8084	3.15	80	3.31	84	3.86	98.0	3.82	96.9
	ASCC8286	3.23	82	3.39	86	3.94	100.0	3.90	99.0
	ASCC8488	3.31	84	3.47	88	4.02	102.0	3.98	101.1
	ASCC8690	3.39	86	3.54	90	4.09	104.0	4.06	103.1
	ASCC8892	3.47	88	3.62	92	4.17	106.0	4.14	105.2
	ASCC9094	3.54	90	3.70	94	4.25	108.0	4.22	107.2
	ASCC9296	3.62	92	3.78	96	4.33	110.0	4.30	109.3
	ASCC94106	3.70	94	4.17	106	4.72	120.0	4.71	119.6
	ASCC100112	3.94	100	4.41	112	4.96	126.0	4.95	125.8
	ASCC106118	4.17	106	4.65	118	5.20	132.0	5.20	132.0
	ASCC112124	4.41	112	4.88	124	5.43	138.0	5.44	138.2
	ASCC118130	4.65	118	5.12	130	5.61	142.5	5.69	144.4
	ASCC127139	5.00	127	5.47	139	6.02	153.0	6.05	153.6
	ASCC132144	5.20	132	5.67	144	6.22	158.0	6.25	158.8
	ASCC138150	5.43	138	5.91	150	6.46	164.0	6.50	165.0



Ordering information



Adapter kits

Cat. no.	Description	For use with T&B Cable Tray type
ABBCCBSRT	AH18 Series kit includes: bolt, channel spring nut and square washer	AH18 Series aluminum
ABBCCBSR	Kit for non-metallic cable tray includes: bracket and round spacer	Non-metallic square rung



Replacement Parts

Cat. no.	Description	For use with cable cleat type
ABBCHDW	M10 bolt and nut	All series

