

Lumacell is adding an exciting new product to its architectural emergency lighting range:

The LSAU Series

Intelligent. Efficient. Discreet.

The surface-mount architectural unit is an emergency lighting solution specifically designed for installations requiring a junction box, whether recessed, surface-mounted, or suspended. Engineered for direct installation, it combines performance, discretion, and ease of installation, making it a smart choice for commercial and architectural environments.



Key features

- Available as a battery unit or as a remote fixture.
- Minimum emergency runtime of 90 minutes.
- Lithium battery with protection circuit module.
- Compatible with recessed, surface-mounted, or suspended junction boxes.
- Perfectly suited for high ceilings.
- Compatible with all types of central systems.
- Proudly made in Canada at our Dorval (Quebec) facility.



Made in **Canada**



Nexus®Pro



Simple, precise, subtle

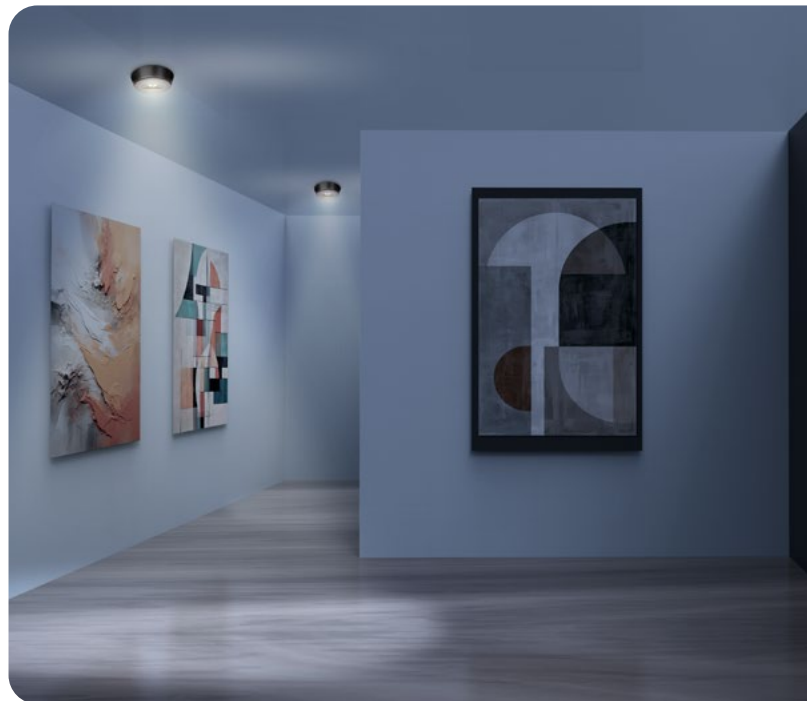
Simplified installation: Designed for direct mounting on a standard junction box, it reduces installation time.

Wide coverage with no adjustment required: With four high-intensity LEDs and predefined, optimized lamp positioning, the LSAU Series provides up to 25 meters (80 ft) of uniform coverage, eliminating risk of misalignment or incorrect aiming.

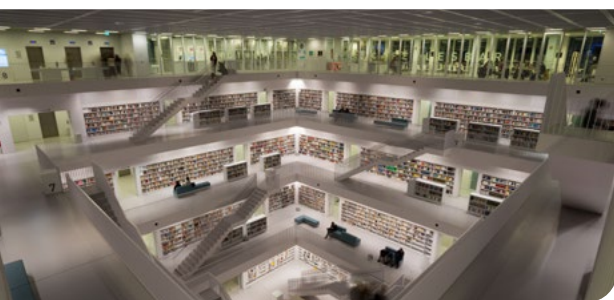
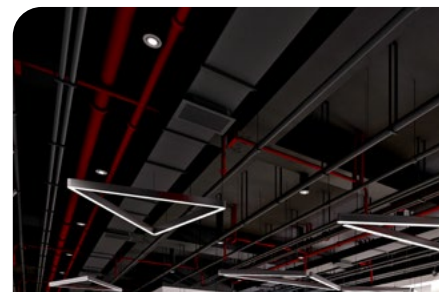
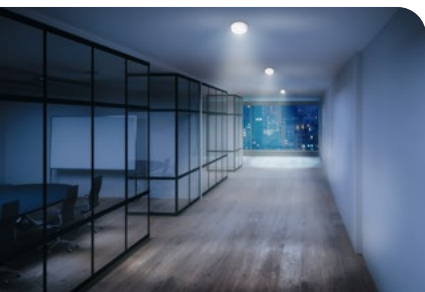
Cost reduction: Optimized lighting design reduces the number of fixtures required.

Compact, low-profile design: Choose between black or white thermoplastic housings, each with a sleek profile that blends seamlessly into commercial and architectural environments.

Remote 24/7 monitoring: Compatible with our Nexus®Pro smart emergency lighting management system.



Types of applications



Choosing a **LSAU Series** battery unit or remote fixture for your project means selecting a unique product that ensures peace of mind, optimizes installations, and blends into spaces with subtlety and style.

For more information, contact your local **Lumacell** representative or visit our website at lumacell.ca

