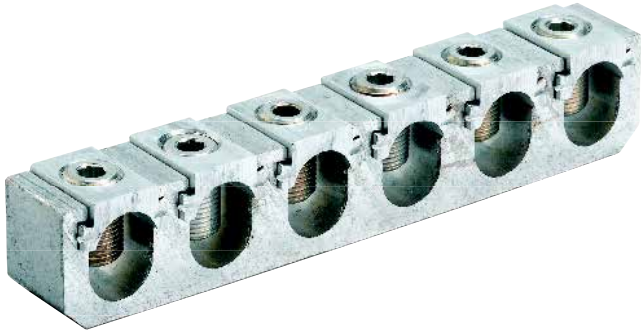


## Pedestal connectors and covers

### Aluminum lay-in pedestal connectors



Effortlessly install or remove large, stiff cables in confined areas.

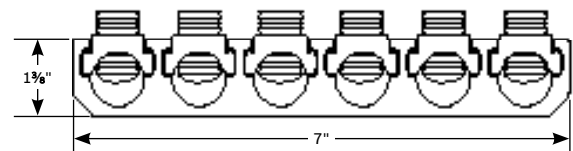
- Cables are easily placed into the keeper slot
- Minimizes the hassle and hazards of having to force cables into the closed cable ports found on conventional mechanical connectors
- Saves time and labor
- Requires only a cable stripper and Allen hex wrench – no crimping tools or dies or other special tools are needed for installation
- Dual-rated for use with aluminum or copper cable
- Ball-bottom screws ensure even force distribution in the cable/connector interface

#### ABCK series

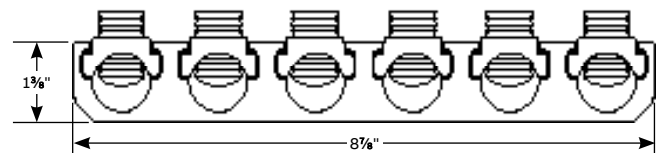
Cat. no.	Conductor range (AWG or kcmil)	Outlets
ABCK 6350	#6–350	6
ABCK 6600	#2–600	6
ABCK 6600 DS*	#2–600	6

\* "-DS" suffix indicates double set screws.

#### Diagrams



ABCK 6350



ABCK 6600

## Pedestal connectors and covers

### Aluminum set-screw bar pedestal connectors – Single-line bar



ABC 4350

Available with up to eight outlets for aluminum or copper conductors.

- Dual-rated to accept aluminum or copper conductors
- Ball-bottom screws ensure maximum conductor contact pressure and break up interstrand oxides
- Meets or exceeds ANSI C119.4 specifications

#### Single-line bar

Cat. no.	Outlets	Length (in.)	Boot number	Cable range (AWG or kcmil)
ABC 240	2	1 <sup>11</sup> / <sub>16</sub>	BB 10	#6–250
ABC 340	3	2 <sup>9</sup> / <sub>16</sub>	BB 10	#6–250
ABC 440	4	3 <sup>7</sup> / <sub>16</sub>	BB 10	#6–250
ABC 540	5	4 <sup>5</sup> / <sub>16</sub>	BB 11	#6–250
ABC 640	6	5 <sup>3</sup> / <sub>16</sub>	BB 11	#6–250
ABC 740	7	6 <sup>1</sup> / <sub>16</sub>	BB 12	#6–250
ABC 840	8	6 <sup>15</sup> / <sub>16</sub>	BB 12	#6–250
ABC 2350	2	2	BB 10	#12–350
ABC 3350	3	3	BB 10	#12–350
ABC 4350	4	4	BB 10	#12–350
ABC 5350	5	5	BB 11	#12–350
ABC 6350	6	6	BB 11	#12–350
ABC 7350	7	7	BB 12	#12–350
ABC 8350	8	8	BB 12	#12–350

Cat. no.	Outlets	Length (in.)	Boot number	Cable range (AWG or kcmil)
ABC 2500	2	2 <sup>1</sup> / <sub>16</sub>	BB 10	#6–500
ABC 3500	3	3 <sup>1</sup> / <sub>16</sub>	BB 10	#6–500
ABC 4500	4	4 <sup>1</sup> / <sub>16</sub>	BB 11	#6–500
ABC 5500	5	5 <sup>1</sup> / <sub>16</sub>	BB 11	#6–500
ABC 6500	6	6 <sup>1</sup> / <sub>16</sub>	BB 12	#6–500
ABC 7500	7	7 <sup>1</sup> / <sub>16</sub>	BB 14	#6–500
ABC 8500	8	8 <sup>1</sup> / <sub>16</sub>	BB 14	#6–500
ABC 2750	2	2 <sup>3</sup> / <sub>4</sub>	BB 10	1/0–750
ABC 3750	3	4 <sup>3</sup> / <sub>16</sub>	BB 13	1/0–750
ABC 4750	4	5 <sup>9</sup> / <sub>16</sub>	BB 13	1/0–750
ABC 5750	5	7	BB 12	1/0–750
ABC 6750	6	8 <sup>3</sup> / <sub>8</sub>	BB 14	1/0–750
ABC 7750	7	9 <sup>13</sup> / <sub>16</sub>	BB 15	1/0–750
ABC 8750	8	11 <sup>3</sup> / <sub>16</sub>	BB 15	1/0–750

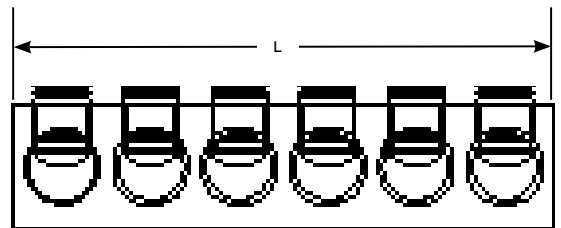
Note: For oxide-inhibitor option, add “-C” suffix to the catalog number.  
 For street light-outlet option, add “-SL” suffix to the catalog number.  
 For insulating covers, see page C59.  
 For special applications, please consult your ABB representative.

01 For EZ Torque shear-head screws supplied in all outlets, add “-TS” suffix to the catalog number.



01

#### Diagram



## Pedestal connectors and covers

### Aluminum set-screw bar pedestal connectors – Double-row bar



High-strength aluminum alloy maintains constant bolting pressure on conductors.

- Dual-rated to accept aluminum or copper conductors
- Ball-bottom screws ensure maximum conductor contact pressure and break up interstrand oxides
- Meets or exceeds ANSI C119.4 specifications

#### Double-row bar

Cat. no.	Outlets	Length (in.)	Width (in.)	Boot no.	Cable range (AWG or kcmil)
ABC 40-22	4	1 <sup>5</sup> / <sub>8</sub>	2	BB 17	#6-250
ABC 40-33	6	2 <sup>7</sup> / <sub>16</sub>	2	BB 17	#6-250
ABC 40-44	8	3 <sup>3</sup> / <sub>16</sub>	2	FB 33*	#6-250
ABC 350-22	4	2 <sup>1</sup> / <sub>8</sub>	2 <sup>1</sup> / <sub>2</sub>	BB 17	#12-350
ABC 350-33	6	3	2 <sup>1</sup> / <sub>2</sub>	FB 33*	#12-350
ABC 350-44	8	3 <sup>15</sup> / <sub>16</sub>	2 <sup>3</sup> / <sub>8</sub>	FB 33*	#12-350
ABC 500-22	4	2 <sup>1</sup> / <sub>16</sub>	2 <sup>3</sup> / <sub>4</sub>	FB 33*	#6-500
ABC 500-33	6	3 <sup>1</sup> / <sub>16</sub>	2 <sup>3</sup> / <sub>4</sub>	FB 33*	#6-500
ABC 500-44	8	4 <sup>1</sup> / <sub>16</sub>	2 <sup>3</sup> / <sub>4</sub>	-**	#6-500
ABC 750-22	4	2 <sup>3</sup> / <sub>4</sub>	3 <sup>1</sup> / <sub>4</sub>	-**	1/0-750
ABC 750-33	6	4 <sup>3</sup> / <sub>16</sub>	3 <sup>1</sup> / <sub>4</sub>	-**	1/0-750
ABC 750-44	8	5 <sup>9</sup> / <sub>16</sub>	3 <sup>1</sup> / <sub>4</sub>	-**	1/0-750

\* EPDM Flexi-Boot, see page C59.

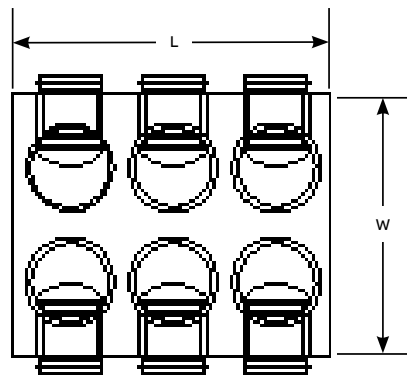
\*\* For other insulating covers, please consult your ABB representative.

Note: For oxide-inhibitor option, add "-C" suffix to the catalog number.

For street light-outlet option, add "-SL" suffix to the catalog number.

For special applications, please consult your ABB representative.

#### Diagram



## Pedestal connectors and covers

### Aluminum pedestal connectors



ZVB 5053

Insulated and uninsulated pedestal connectors with up to 10 outlets.

- Compact Zeebar® design doubles cable capacity and reduces footprint
- ZVB series features clear PVC encapsulation to enable safe installations and disconnects – and provide insulation
- Easy to install – all screws are on top, and a  $\frac{5}{16}$ " hex wrench is all you need
- Dual-rated to accept aluminum or copper conductors
- Ball-bottom screws ensure maximum conductor contact pressure and break up interstrand oxides
- Meets or exceeds ANSI C119.4 specifications

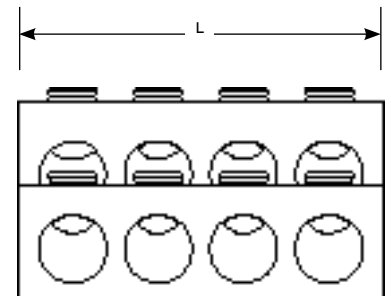
#### Insulated and uninsulated pedestal connectors

Insulated Cat. no.	Uninsulated Cat. no.	Outlets	L (in.)	Cable range (AWG or kcmil)
ZVB 2023	ZBC 2023	4	2 $\frac{1}{4}$	#12–350
ZVB 3033	ZBC 3033	6	3 $\frac{1}{4}$	#12–350
ZVB 4043	ZBC 4043	8	4 $\frac{1}{4}$	#12–350
ZVB 5053	ZBC 5053	10	5 $\frac{1}{4}$	#12–350
ZVB 2025	ZBC 2025	4	2 $\frac{7}{16}$	#6–500
ZVB 3035	ZBC 3035	6	3 $\frac{9}{16}$	#6–500
ZVB 4045	ZBC 4045	8	4 $\frac{11}{16}$	#6–500
ZVB 5055	ZBC 5055	10	5 $\frac{13}{16}$	#6–500

Note: For oxide-inhibitor option, add "-C" suffix to the catalog number.

For a kit containing one uninsulated and two insulated connectors, add "-K" suffix to the catalog number.

#### Diagram



## Pedestal connectors and covers

### Insulated pedestal connector bars — Type PSB-C



Port-separated clear plastic cover provides insulation against accidental contact during installation.

- Bars are constructed of 6061-T6 aluminum alloy for strength and conductivity
- Standard aluminum set screws with 5/16" socket hex spread compressive forces over conductor strands, reduce strand damage, increase interstrand movement, result in lower contact resistance and provide high set-screw torque retention
- Dual-rated for use with aluminum or copper conductors
- Contax® oxide inhibitor standard in all conductor ports
- Meets ANSI C119.4 specifications
- Recognized by RUS

#### 350 series – Insulated PSB bars dual rated (Al-Cu)

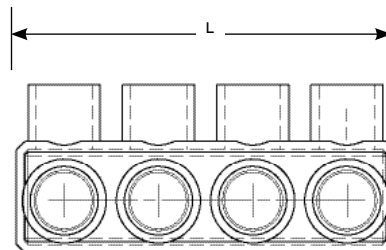
Cat. no.	No. of ports	Cable range (AWG or kcmil)	Length (in.)
PSB4359C	4	#12-350	4.34
PSB6359C	6	#12-350	6.43
PSB8359C	8	#12-350	8.53

#### 500 series – Insulated PSB bars dual rated (Al-Cu)

Cat. no.	No. of ports	Cable range (AWG or kcmil)	Length (in.)
PSB4559C	4	#10-500	4.9
PSB6559C	6	#10-500	7.28
PSB8559C	8	#10-500	9.66

Note: For additional product options, contact your ABB representative.

Diagram



## Pedestal connectors and covers

Insulated aluminum pedestal connectors



CLR 6350

See the connector through the transparent insulator.

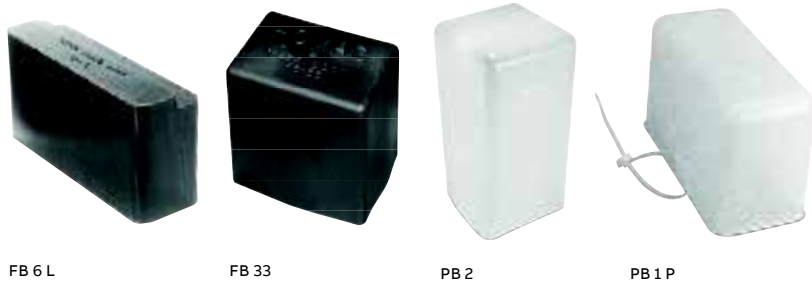
- Integral cover helps retain set screws – no lost parts to worry about
- Fully insulated with clear lock-on PVC cover
- Recognized by RUS

### Insulated aluminum pedestal connectors

Cat. no.	Outlets	Wire range (AWG or kcmil)
CLR 340	3	#12-4/0
CLR 440	4	#12-4/0
CLR 540	5	#12-4/0
CLR 640	6	#12-4/0
CLR 3350	3	#12-350
CLR 4350	4	#12-350
CLR 5350	5	#12-350
CLR 6350	6	#12-350

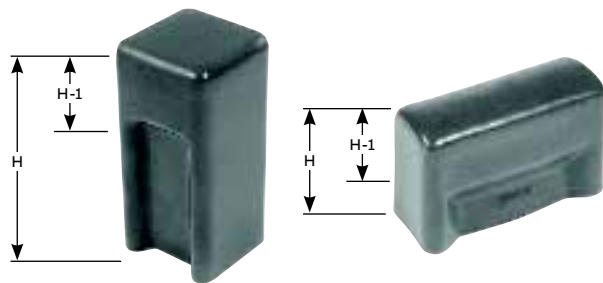
## Pedestal connectors and covers

Insulating covers for set-screw bar pedestal connectors



Rugged insulating covers to protect pedestal connectors.

- FB 33 and FB 6 L feature EPDM rubber flexi-boot and flexible locking ribs
- Boot will not crack from cold embrittlement and will not degrade or soften due to heat
- Locking ribs prevent accidental removal of EPDM cover



### EPDM rubber FB series

Cat. no.	Height (in.)	Length (in.)	Width (in.)
FB 33	5 $\frac{1}{4}$	4 $\frac{3}{4}$	3 $\frac{3}{8}$
FB 6 L	3 $\frac{1}{2}$	7 $\frac{1}{4}$	2 $\frac{1}{16}$

### PVC BB series

Cat. no.	Height (in.)	Height-1 (in.)	Length (in.)	Width (in.)
BB 10	3 $\frac{5}{16}$	1 $\frac{3}{8}$	4 $\frac{1}{8}$	2 $\frac{1}{8}$
BB 11	2 $\frac{7}{8}$	1 $\frac{3}{8}$	5 $\frac{7}{8}$	2 $\frac{1}{8}$
BB 12	3 $\frac{3}{4}$	1 $\frac{7}{8}$	7 $\frac{3}{4}$	2 $\frac{1}{4}$
BB 13	3 $\frac{3}{4}$	1 $\frac{7}{8}$	5 $\frac{15}{16}$	2 $\frac{3}{4}$
BB 14	3 $\frac{3}{4}$	1 $\frac{7}{8}$	8 $\frac{5}{8}$	2 $\frac{3}{4}$
BB 15	3 $\frac{3}{4}$	1 $\frac{7}{8}$	11 $\frac{11}{16}$	2 $\frac{3}{4}$
BB 17	6 $\frac{7}{8}$	2 $\frac{1}{8}$	3 $\frac{1}{8}$	3 $\frac{1}{16}$

### Polyethylene PB series

Cat. no.	Height (in.)	Length (in.)	Width (in.)
PB 2	8	4	4 $\frac{3}{16}$
PB 1 P	4	6 $\frac{1}{4}$	2 $\frac{7}{8}$

Note: For cover sizes not listed, please consult your ABB representative.  
All boots have a nominal wall thickness of  $\frac{1}{8}$ ".  
All sizes given for BB and PB series are inside dimensions.