

## Low voltage brackets

### Steel

#### Features and benefits

- Eliminates the need for an electrical box when installing low voltage Class 2 wiring
- For old work or new work
- Installs easily with a drywall saw and screwdriver



CIMB-0



CIMB-1



CICSB-1



WBF-1



CIMLV-1

Cat. No.	Description
<b>Low voltage mounting brackets</b>	
CIMB-0	Flat mounting brackets that provides quick installation of low voltage class 2 communication outlets. Positioning tabs ensure straight installation
CIMLV-1	Mounting brackets that provides quick installation of low voltage class 2 communication outlets. Can be installed on wood or steel studs.
CIMB-1	Mounting bracket that provides quick installation of low voltage class 2 communication outlets. Raised 1/2 in. Positioning tabs ensure straight installation
CICSB-1	Mounting brackets that provides quick installation of low voltage communication outlets. May be used with all 2 1/2 in. deep gangable boxes
WBF-1	Low voltage wall bracket



CI1544



CI1544P



CIS-1X2



CIS-2 / CIS-4

Cat. No.	Dimensions (in.)		Hole Size (in.)	Suggested Application NMD90 (loomex)
	H	W		
<b>Nailing straps (Zinc plated steel)</b>				
CI1544	0.25	0.51	-	14/2-12/2
<b>Nailing straps (Polyethylene)</b>				
CI1544-P	0.25	0.49	-	14/2-12/2
CI1546-P	0.25	0.75	-	14/2-8/2
<b>Cable staples (Galvanized steel)</b>				
CIS-1	0.25	0.48	-	14/2-12/2
CIS-2	0.44	0.54	-	14/2-10/2; 14/3-10/3; 2 cables 14/2; 2 cables 12/2
CIS-3	0.49	0.70	-	10/2-8/2; 14/3-10/3
CIS-4	0.76	0.86	-	8/3-6/3
<b>Double cable staples (Galvanized steel)</b>				
CIS-1X2	0.25	0.48 X 2	-	14/2-12/2
CIS-1X2-FP3	0.25	0.48 X 2	-	
CIS-1X2-FP5	0.25	0.48 X 2	-	

## Low voltage brackets

### Nonmetallic

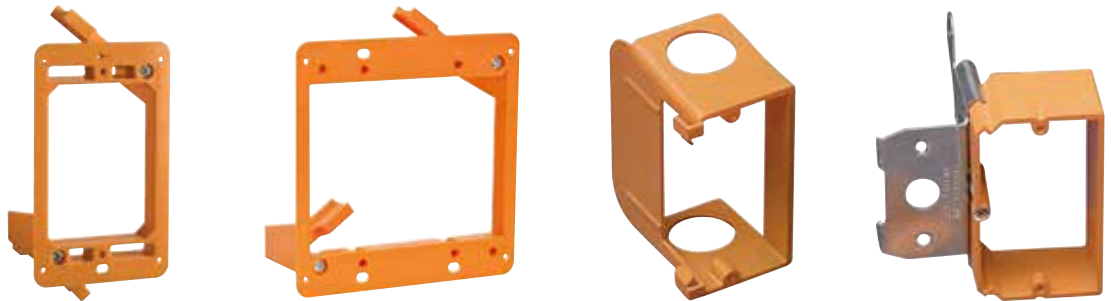
—  
**01 SC100A, SC200A, SC300A**  
 Open-backed to easily accommodate the bend radiuses required for low voltage cabling and deep devices such as volume controls, and is designed to fit a standard two-gang three-gang faceplate. It also features an easy nail-on mounting or screw-in bracket, while more hard shell provides increased durability and no racking.

—  
01

—  
**02 SC100RR**  
 Swing arm rework bracket. 1 gang.

—  
**03 SC200RR**  
 Swing arm rework bracket. 2 gang.

—  
**04 SC100SC**  
 This low voltage bracket provides a low voltage outlet next to a previously installed high voltage outlet. For new construction and rework. Attaches easily to most electrical boxes, and is designed to fit a standard two-gang faceplate.

—  
02—  
03—  
04—  
05

—  
**05 SC100ADJC**  
 New work adjustable low voltage bracket. 1 gang.

Cat. No.	Description
<b>Low voltage brackets</b>	
SC100A	One-gang backless bracket 2.32 in. W x 3.73 in. L
SC200A	Two-gang backless bracket 5.35 in. W x 3.81 in. L
SC300A	Three-gang backless bracket 8.69 in. W x 7.20 in. L
<b>Old work backless brackets</b>	
SC100RR	One-gang backless old work bracket w/ swing clamps 2 <sup>1</sup> / <sub>4</sub> in. x 3 <sup>1</sup> / <sub>4</sub> in.
SC200RR	Two-gang backless old work bracket w/ swing clamps 3.92 in. x 4.00 in.
<b>Low voltage add-on bracket</b>	
SC100SC	One-gang add-on bracket 1.80 in. W x 3.68 in. L
<b>One-gang and two gang – low voltage</b>	
SC100ADJC	One-gang adjustable brackless bracket 3 <sup>7</sup> / <sub>8</sub> in. W x 3 <sup>3</sup> / <sub>4</sub> in. H
SC200ADJC	Two-gang adjustable brackless bracket 5 <sup>5</sup> / <sub>8</sub> in. W x 3 <sup>5</sup> / <sub>8</sub> in. H
CSA not applicable	