

# EZGround® Lay-In Lug Connector



Open-faced design enables installer to quickly lay-in grounding conductor as jumper to multiple conduits with no break in ground conductor.

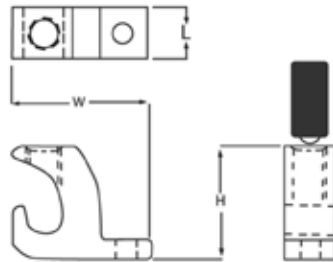
**Features and benefits**

- Ideal for swimming pool grounding applications
- Rated for direct burial "DB"



Cat. no.	Conductor range		Stud size		Dimensions					
	AWG	mm <sup>2</sup>	(in.)	mm	H (in.)	mm	W (in.)	mm	L (in.)	mm
CULL4-14TP*	4-14	16-1.5	0.22	5.59	0.78	19.81	0.38	9.65	1.07	27.18

\* Tin-plated, 90°C Rating.



**ABB Electrification Canada ULC**  
**Installation Products**  
 700 Thomas Avenue  
 Saint-Jean-sur-Richelieu, Quebec J2X 2M9  
 Tel.: +1 (450) 347 5318  
 Toll Free: +1 (800) 362 2952  
 Fax: +1 (450) 347 1976

We reserve the right to make technical changes or modify the contents of this document without prior notice. With regard to purchase orders, the agreed particulars shall prevail. ABB Inc. does not accept any responsibility whatsoever for potential errors or possible lack of information in this document.

We reserve all rights in this document and in the subject matter and illustrations contained therein. Any reproduction, disclosure to third parties or utilization of its contents – in whole or in parts – is forbidden without prior written consent of ABB Inc. Copyright © 2020 ABB. All rights reserved.